

# Welcome back

Year 9

Student induction

## Changes to support our school community.

Year groups have been allocated parts of the school for teaching and break/lunch times.

Teaching spaces have been changed to ensure students are facing forward.

Teaching spaces maintain 2m social distancing for teacher and students.

Each year group has a hand wash station and allocated set of toilets.

Clear guidance in corridor spaces to help you keep left.

Additional catering points have been created.

The First Aid room has been moved to ST2/ONCALL (Next to Mrs Laycock's room)



**Travelling to School**

# Travelling and arriving at school

- Please **do not** travel or meet in large groups and **do** maintain social distancing.
- Please consider the time your journey takes so you arrival at school for 8.20am.
- When arriving at the school please follow the correct route in to the site (Staff will be on duty to help support you).
- Please go directly to your year group bubble area and wash your hands.

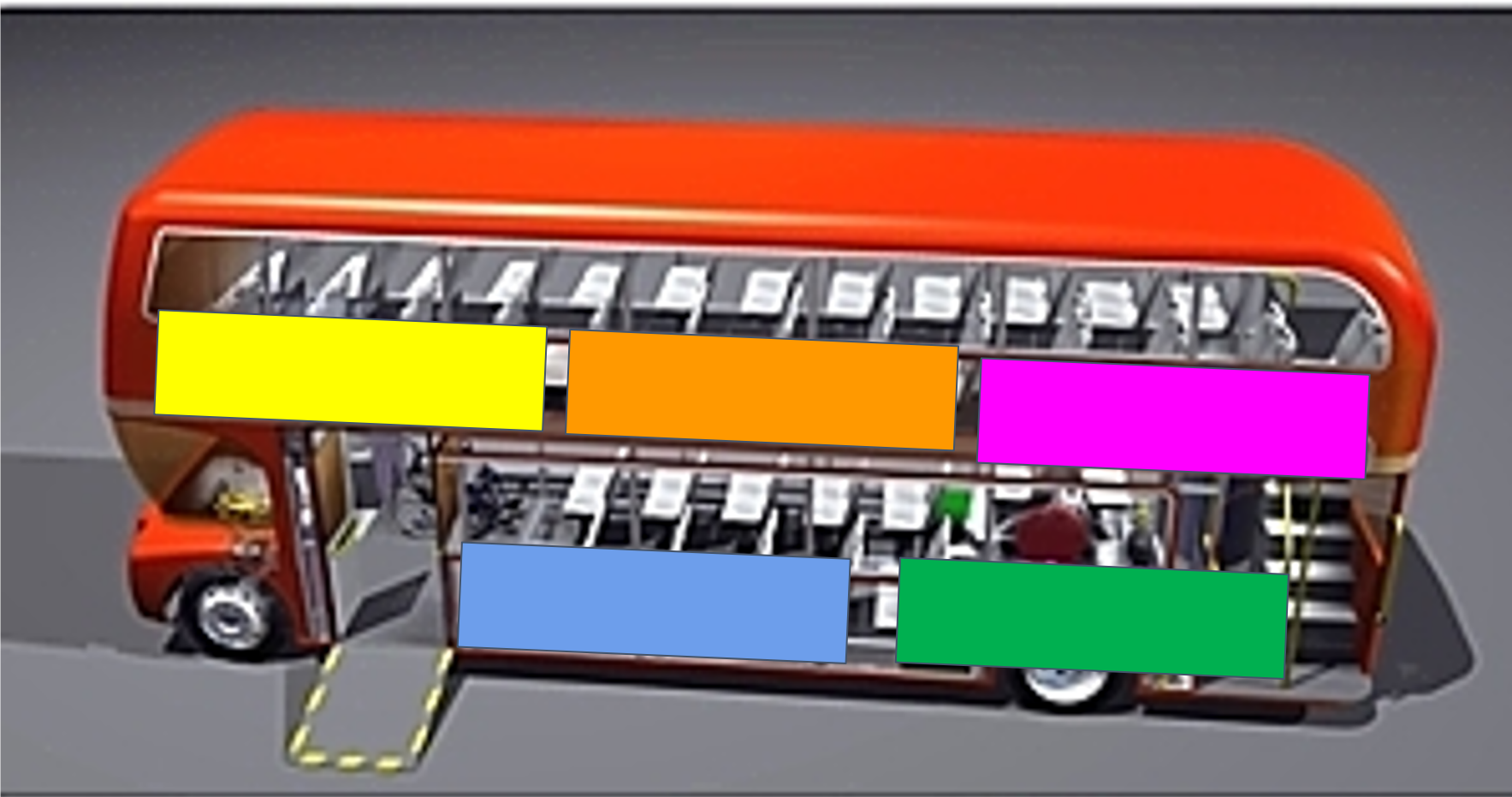
# Students using school buses

You must have with you: **hand sanitiser** and a **face covering**.



- Line up sensibly at your bus stop, allowing for 2 metre social distancing.
- Students must use hand sanitiser and put on face covering before entering the bus.
- Have your bus pass/ticket ready.

# Zoning guidelines on Bus 19, Mersea A and B



- ★ Please sit in the allocated area shown by the colour stickers.
- ★ Leave a row between groups if possible.
- ★ Ensure that you stay seated and face forward in your bubble group.
- ★ Behave appropriately following the drivers requests.

**Year 7  
Zone**

**Year 8  
Zone**

**Year 9  
Zone**

**Year 10  
Zone**

**Year 11  
Zone**



# Face coverings on buses

- Students must wear a face mask.
- Please get off the bus and go straight onto school site.
- Once off the bus you can remove your face mask.
- Face masks not in use need to go into a plastic bag/container and be put away.



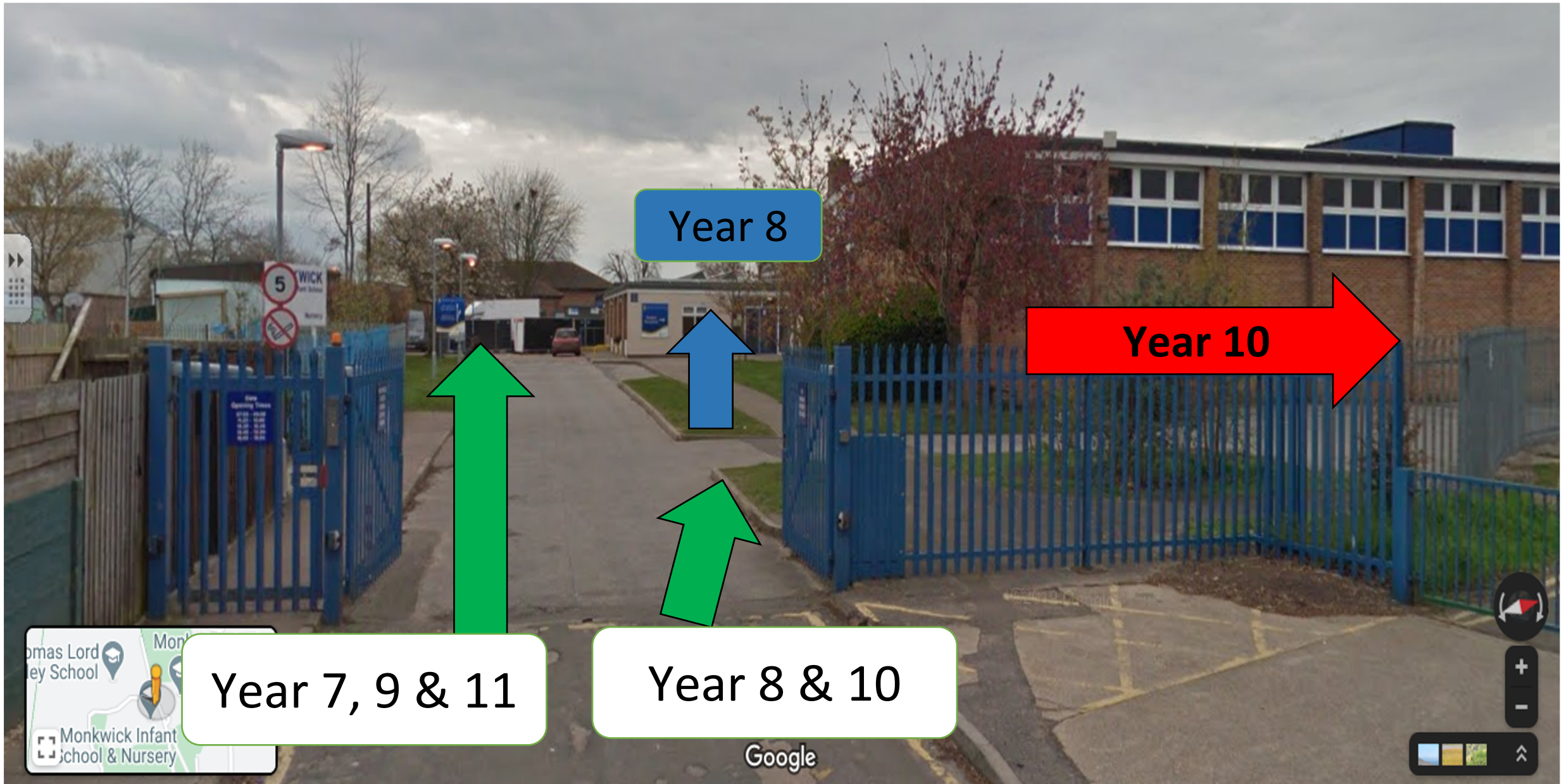
**On the School Site**

# Student access – turning circle

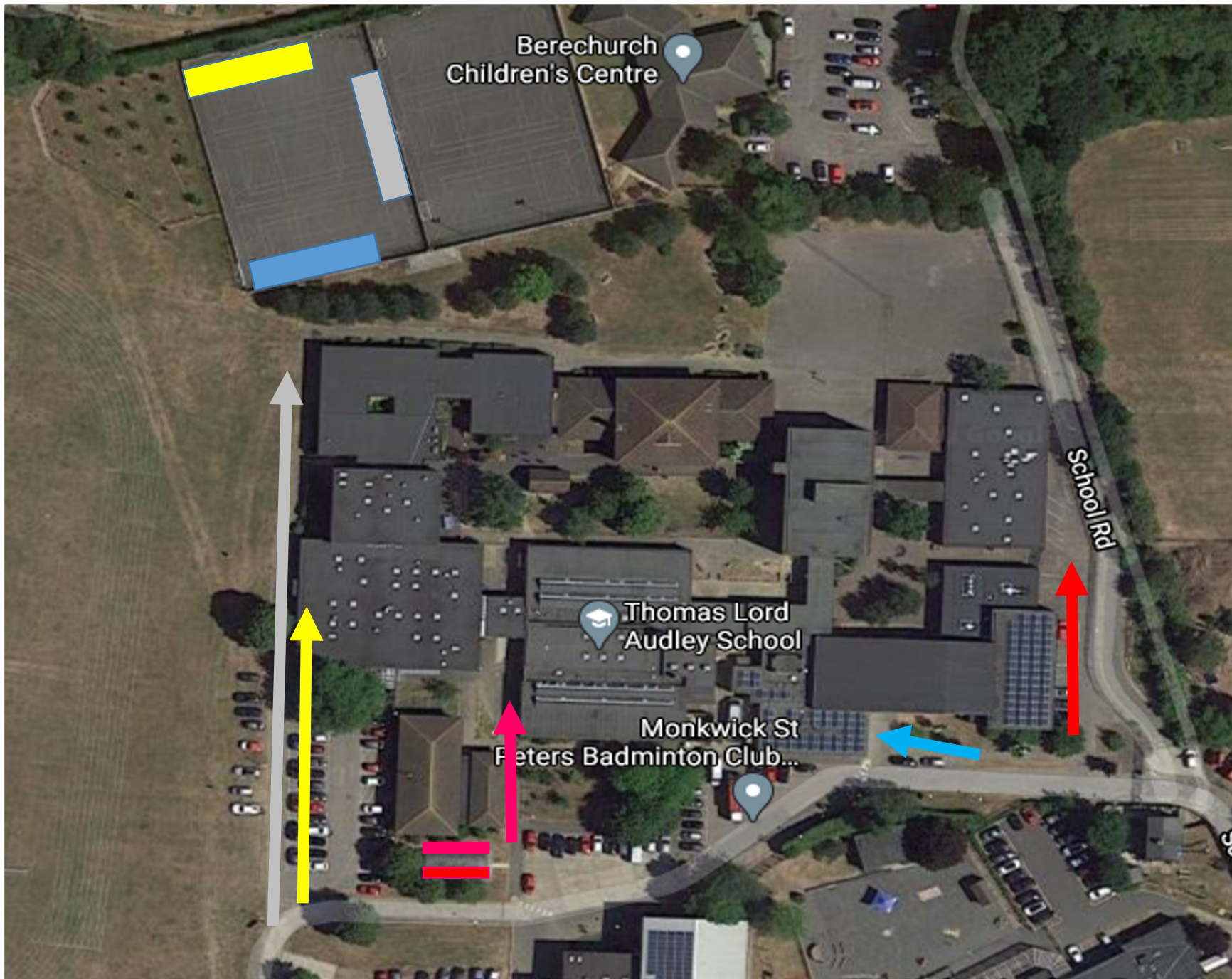




# Student access – School Road gate





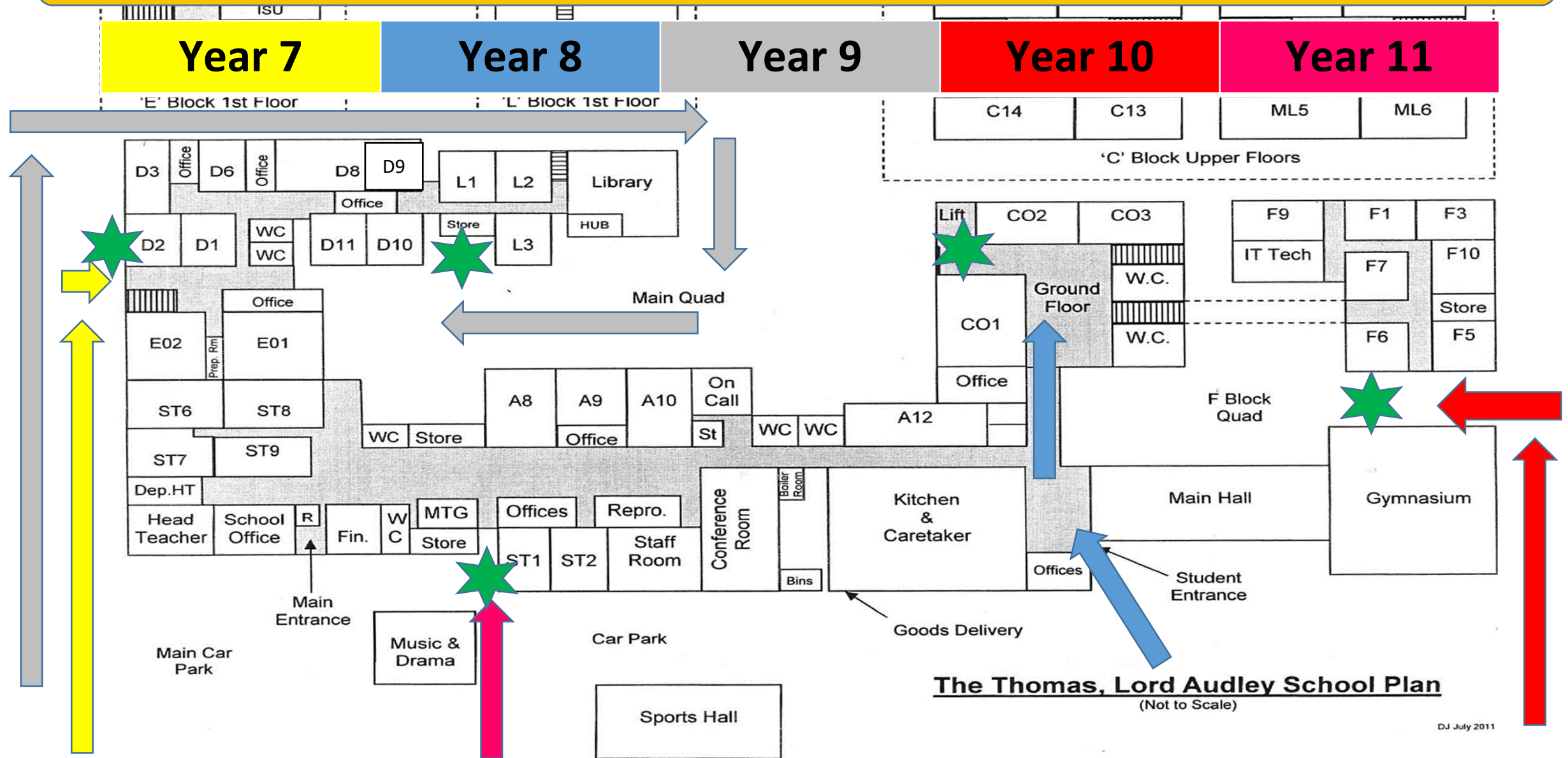


Year 7	Yellow
Year 8	Blue
Year 9	Grey
Year 10	Red
Year 11	Pink

## Bike Shelter allocation

The areas will be locked at the start of the day.

# Where you enter the school

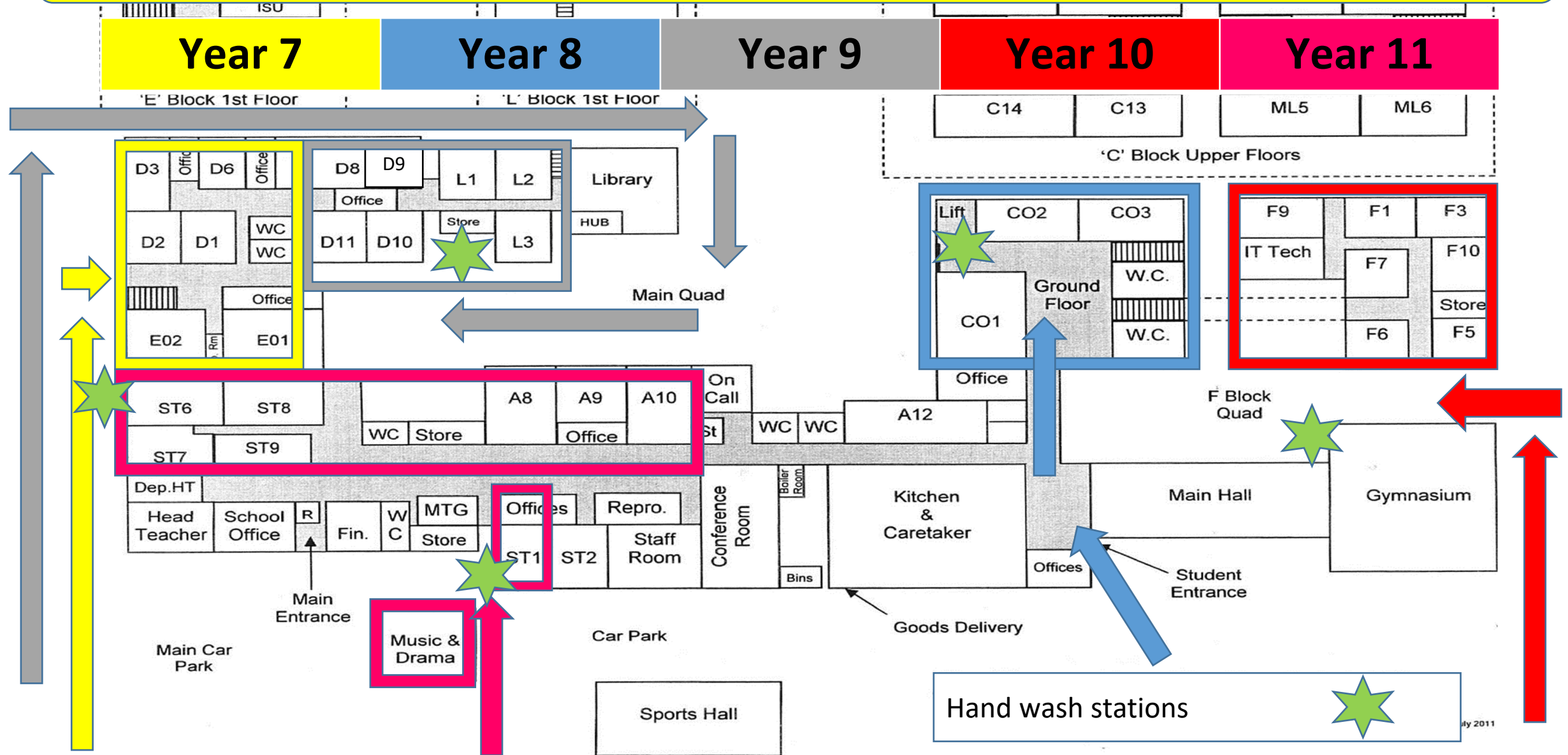


# Personal Year Group Information

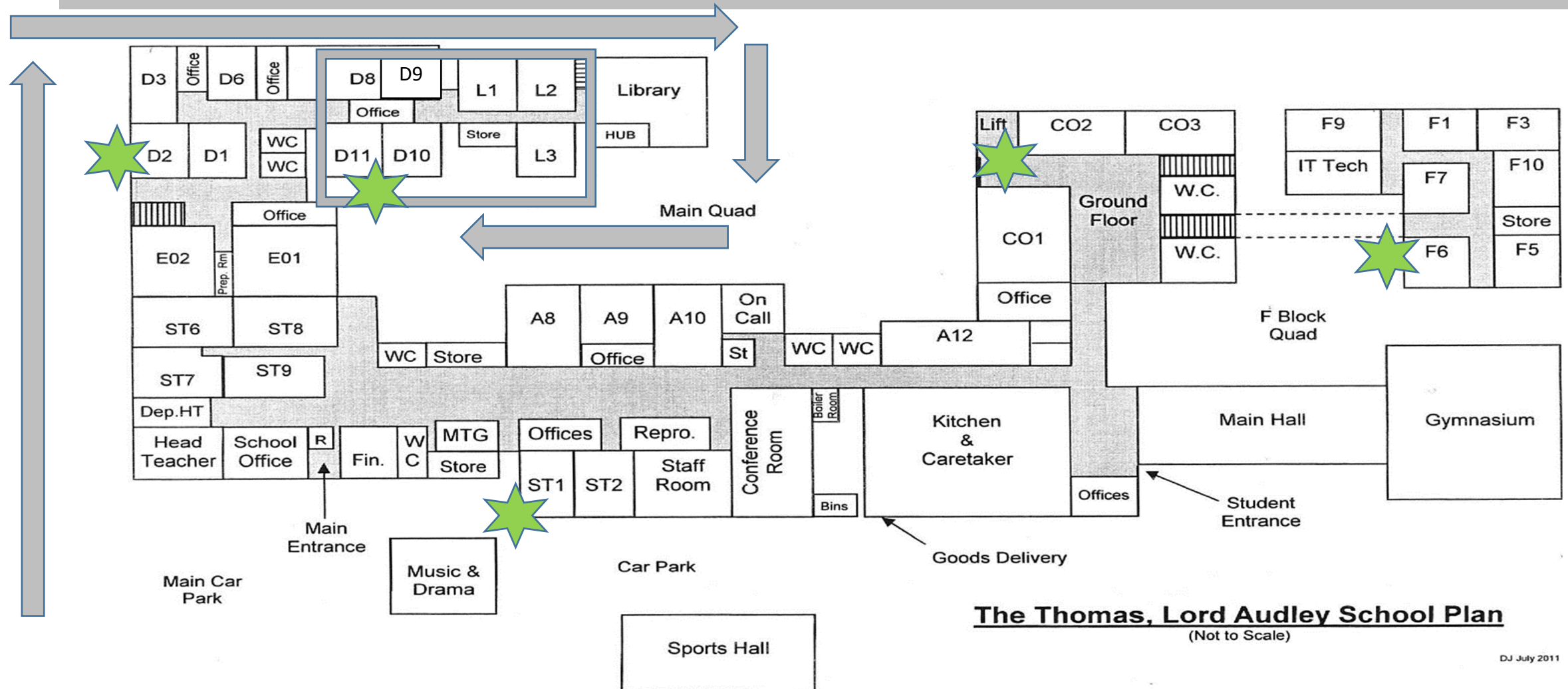
- Personalised entry route, hand wash station and bubble zones
- Map of bike areas
- Break time
- Lunch time
- Catering facilities



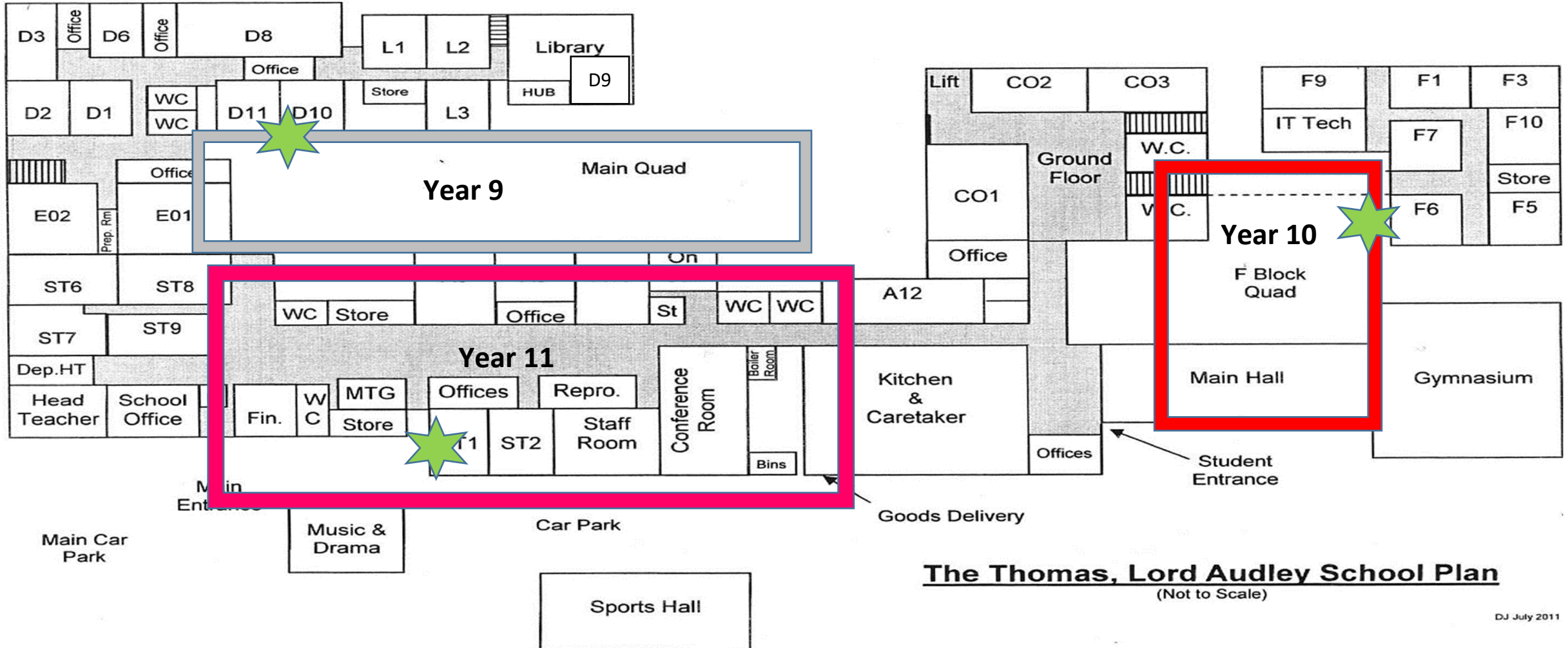
# Year Bubble – allocated areas



# Year 9 – Bubble area and route to handwashing station.

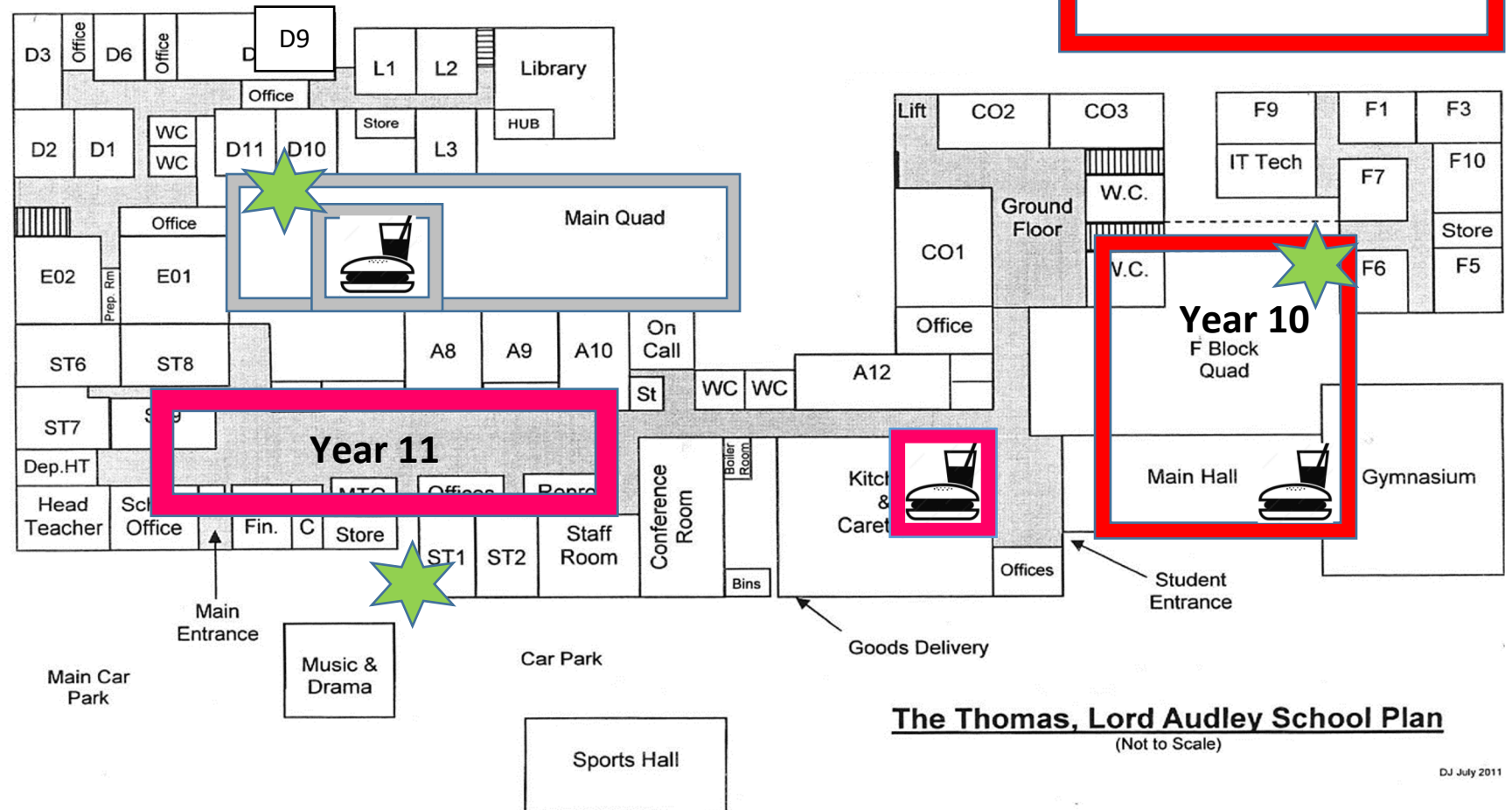
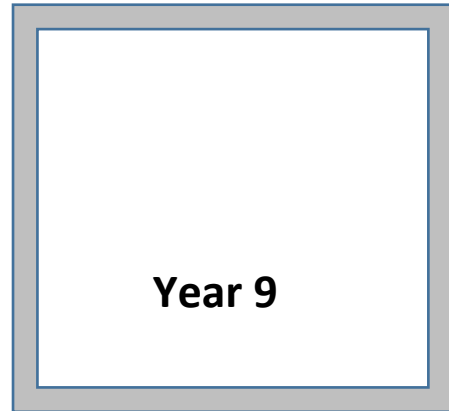


# Year 9, 10 and 11 - Break time space.



# Year 9, 10 & 11 - Lunch time space and catering points.

## 1.25 – 2.05





# Toilet facilities

- Your toilets will be in the Science block and you will share them with Year 7.
- The toilet block will be cleaned every 30 minutes.
- Please be sensible and patient when using the toilets maintaining social distancing with Year 7.
- The toilet area will be managed by a member of staff at break and lunch time.
- Please allow plenty of time at break to go to the toilet as they could be busy.



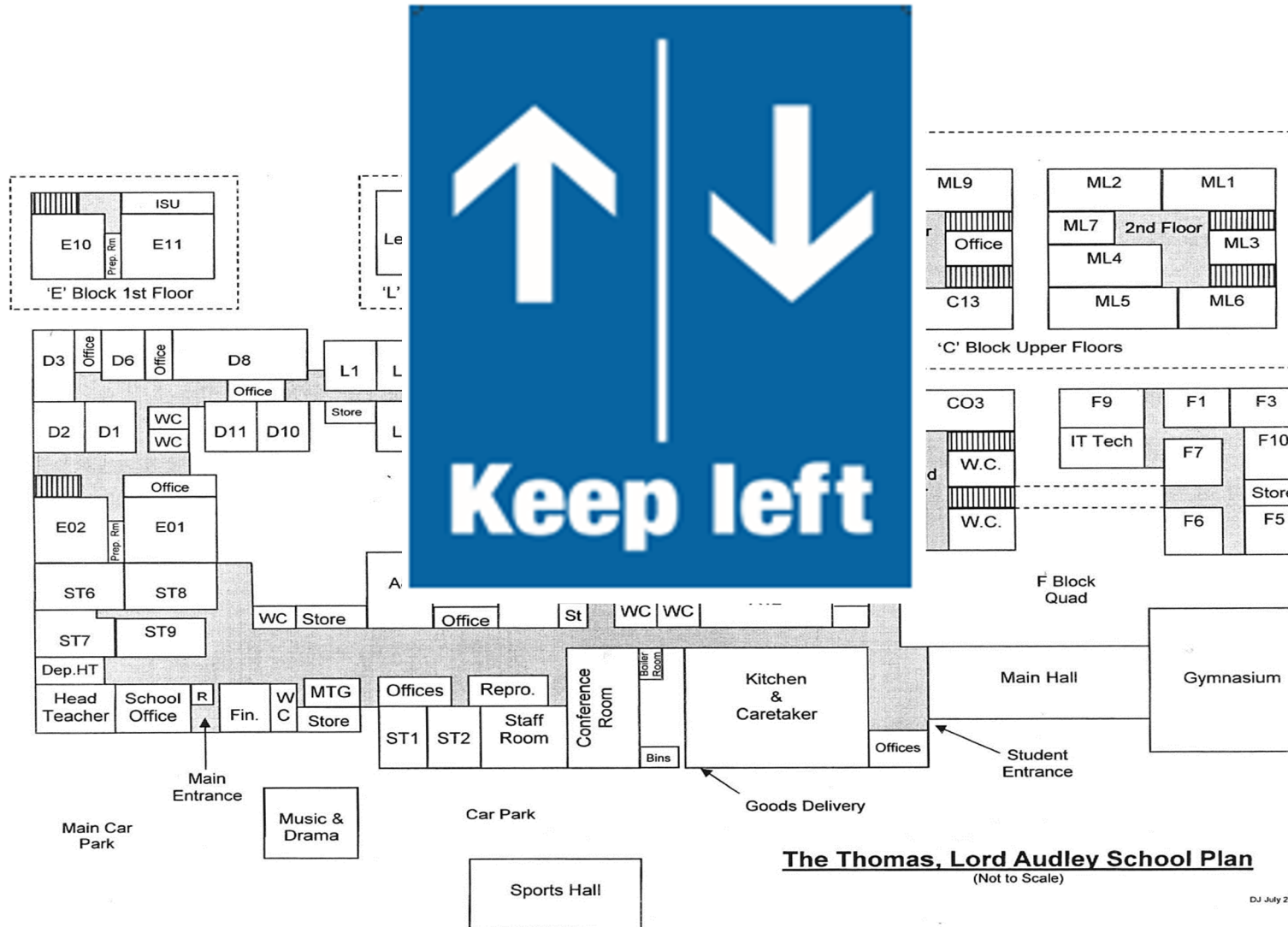
**Around the School**

# In the classroom



- Classrooms are setup with all seats facing forward.
- Remain seated when in the class.
- Respect other students' and the teacher's work space.
- Please do not walk about to talk with your friends.
- Try not share your equipment with other students.

# Movement around the school



In corridors please keep to the left.

Staff and students will be expected to follow this.

# Try to avoid touching the doors



All main doors will be open so you do not need to touch them.



# Student lanyards - health and safety

You will be given your own lanyard. These will help us to be able to identify the year group to which you belong so that we can ensure we are managing the risk of spreading Coronavirus appropriately.

Year 7 - Yellow

Year 8 - Blue

Year 9 - Grey

Year 10 - Red

Year 11 - Pink

**You should wear your lanyard as part of your school uniform.**



# **Managing Hygiene - Taking Personal Responsibility**

# Students entering the site at 8.15/20am



- Students to go straight to their hand washing station/toilets and bubble areas.
- Students to wash hands in line with medical guidance.
- Students then to go to their allocated tutor/teaching room.
- Hand gel stations will be inside of every classroom. Students will use hand gel when entering/leaving classrooms each time.

# Hygiene essentials

Arrive at school	Tutorial time (end)	Period 1 (Start)	Period 2 (Start)	Break (Start)	Period 3 (Start)
Handwash	Sanitise	Sanitise	Sanitise	Hand Wash	Sanitise

Y9, 10 & 11 Period 4 (Start)	Y9, 10 & 11 Lunch (Start)	Y9, 10 & 11 Period 5 (Start)
Sanitise	Hand Wash	Sanitise





# Year group bubble toilets



- Use the toilets for your year group bubble only.
- Ensure you wash your hands correctly.
- Paper towel dispensers

# 7 Steps to Handwashing



**Palm to palm**



**Between fingers**



**Back of hands**



**Base of thumbs**



**Back of fingers**



**Fingernails**



**Wrists**



**Rinse and wipe dry**

Play video.

<https://www.youtube.com/watch?v=bQCP7waTRWU>

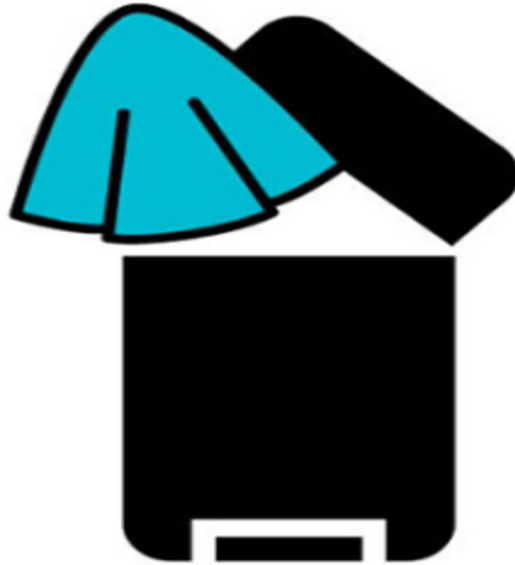
**Please use the tissues provided in your class if you need to sneeze, cough or blow your nose**



HM Government



**CATCH IT.**



**BIN IT.**



**KILL IT.**

**Remember to wash your hands for 20 seconds**

# Face coverings on site

- Change in recent Government and DfE guidance.
- Consistent approach across all Sigma Trust secondary schools.
- Students and staff will be encouraged to wear face masks when in corridors and where social distancing cannot be maintained.
- Students must have a face covering and a suitable plastic storage bag.
- Face masks need to go into a plastic bag/container and be put away after use.





As you remove the mask, pull it away from your face.

# Lunch Boxes



- ★ You are able to use plastic lunch boxes at school.
- ★ Please ensure they remain in your school bag until break or lunchtime.
- ★ No other student is allowed touch your lunch box.
- ★ Please put your lunch box back in your school bag.

**Other things...**

# Lunch Pass



- There will be no lunch passes given out to students.
- Students will sadly not be allowed off the school site at lunch time due to COVID-19.
- Please talk to your Head of Year if you have a concern.
- We will review this as new information comes out from the Government.



# Student Lockers

- Student lockers have been cleared from classrooms and corridors to create more space.
- Students will not have access to lockers during Autumn term.
- School books will be left in classes and you will wear your PE kit on the days you have PE.
- If you have a locker with things in there, please let your Head of Year know so we can arrange for you to collect them.



# PE Lessons and PE Kit



- Schools are not allowed to use shared changing rooms.
- All students will need to wear their PE kit on the day(s) you have PE.
- Please ensure you check your timetable on the days you have PE.

## Lesson time.

- Go to the classroom on your timetable.
- Your PE teacher will register and collect you from your classroom.

# 'A' Block Desk Area – SLT Hub



- This desk will be managed by the member of SLT ONCALL as a point of contact.
- If injured you need to go to the SLT desk and then you will be asked to go into ST2 the new First Aid room.



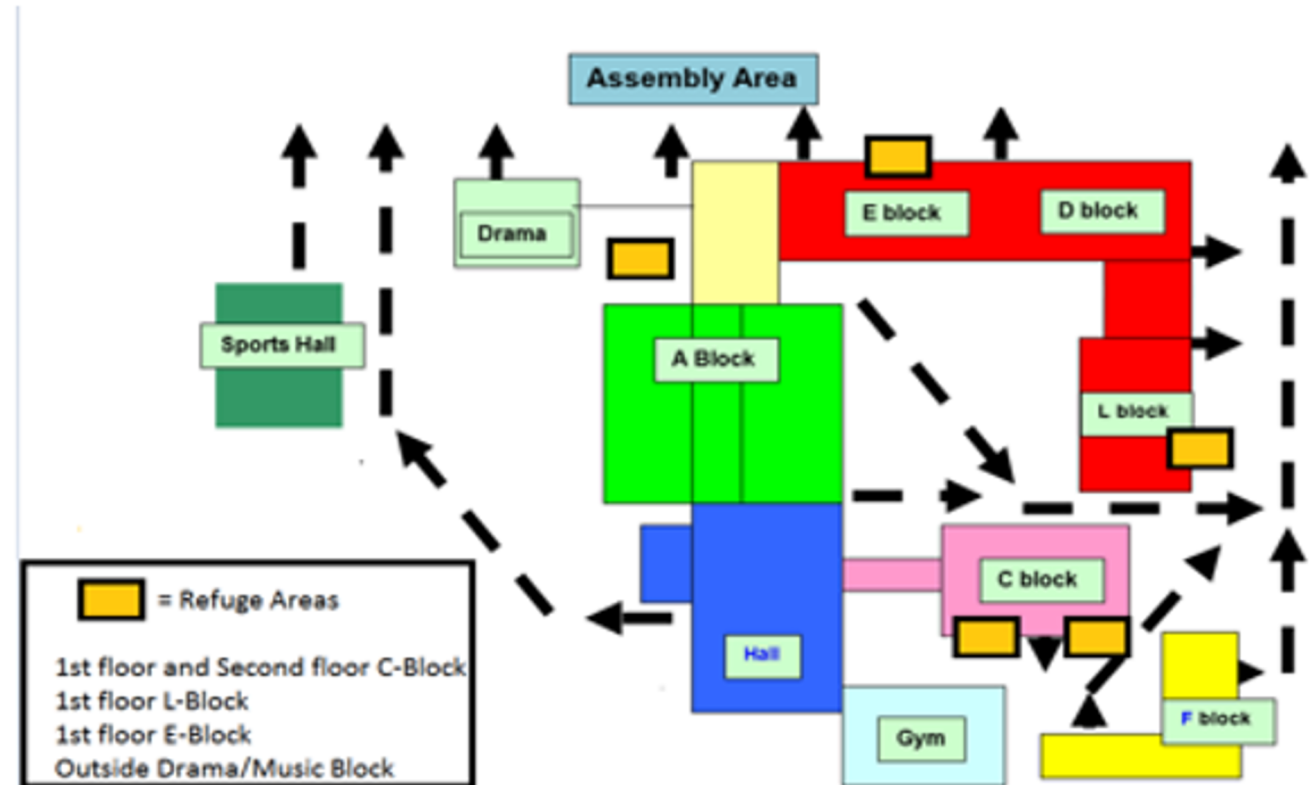
# Fire Evacuation

## Instructions for Evacuation:

- On hearing the fire alarm (two-tone continuous alarm), stop what you are doing.
- Leave the building immediately via the nearest fire exit.
- Walk calmly away from buildings towards the school field.
- Do NOT re-enter the building once you are outside
- When at the relevant assembly area for your group stand quietly, maintaining social distancing from your teaching group.

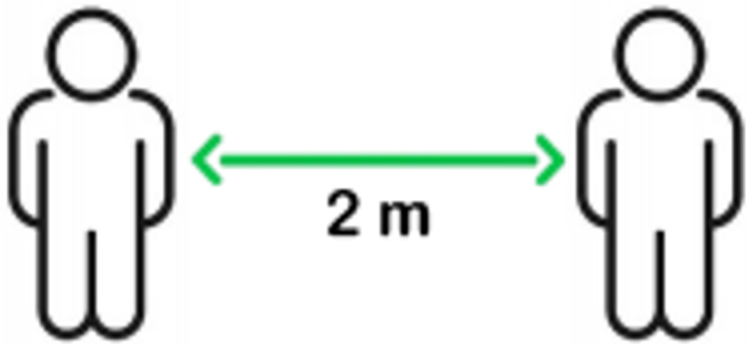
## Field Assembly Arrangements

Year 11	Year 7	Year 8	Year 9	Year 10
---------	--------	--------	--------	---------



# Remember to Social Distance

## TO AND FROM SCHOOL



- stay 2 metres apart
- walk with maximum one other person
- do NOT walk or gather as a group



**Any questions?**